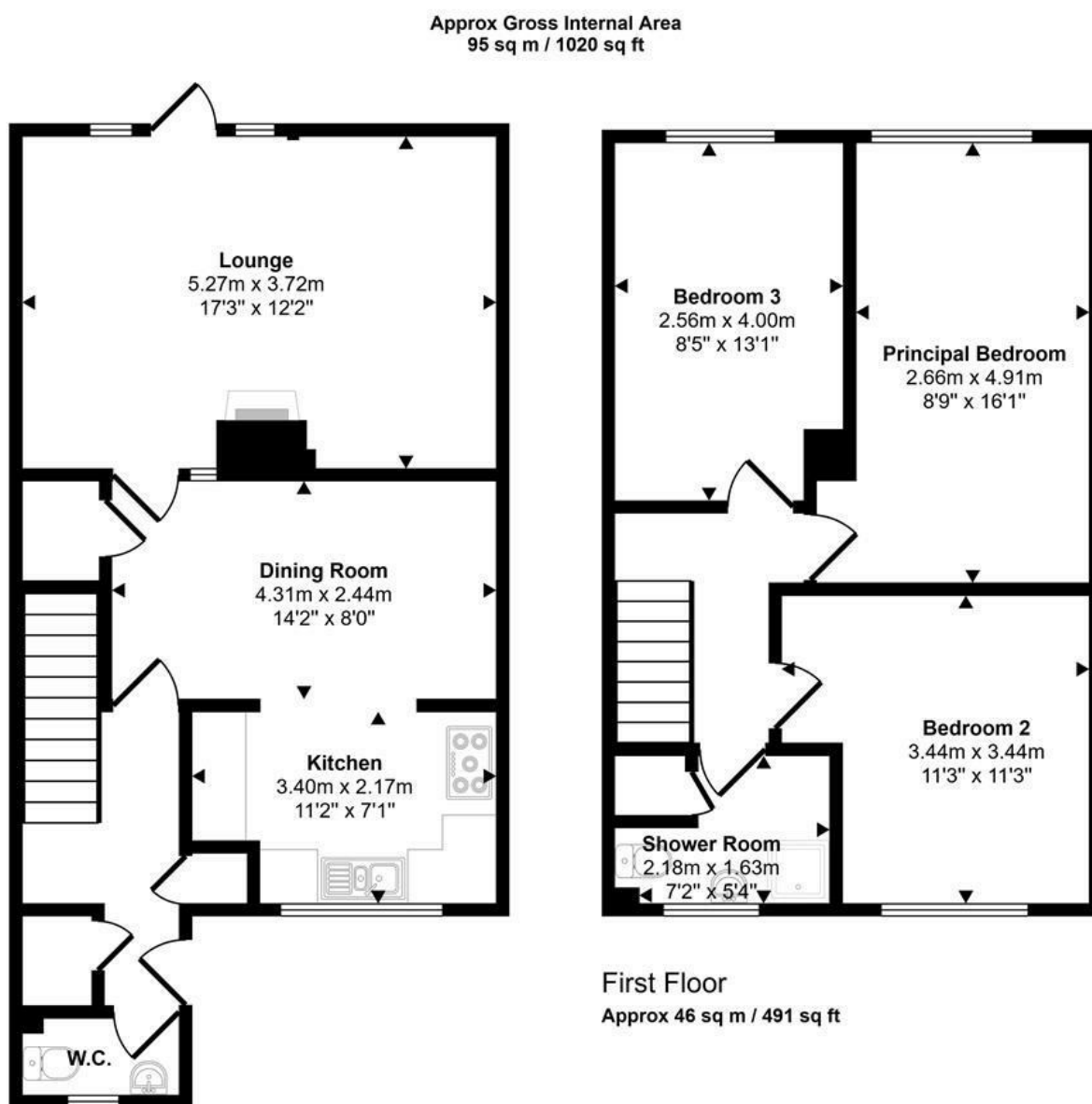




Middleton Crescent | Norwich | NR5
 Guide Price £240,000



Energy Efficiency Rating		
	Current	Potential
Very energy efficient - lower running costs		
(92 plus) A		
(81-91) B		
(69-80) C		
(55-68) D		
(39-54) E		
(21-38) F		
(1-20) G		
Not energy efficient - higher running costs		
England & Wales		EU Directive 2002/91/EC

Disclaimer – In accordance with the Property Misdescriptions Act, the company gives notice that all descriptions, references to condition, necessary permissions for use and other details are given in good faith and believed to be correct, but any intending lessees do not rely on them as statements of fact, but must satisfy themselves by inspection or other means, as to their accuracy.

This floorplan is only for illustrative purposes and is not to scale. Measurements of rooms, doors, windows, and any items are approximate and no responsibility is taken for any error, omission or mis-statement. Icons of items such as bathroom suites are representations only and may not look like the real items. Made with Made Snappy 360.

abbotFox presents this spacious mid terraced family home. Set within the popular residential area of Costessey, this home offers an internal space that belies its external appearance.

The accommodation is neatly arranged over two floors and comprises an inviting entrance hall, re-fitted cloakroom, kitchen diner and generous lounge. The first floor offers three double bedrooms and modern family shower room accessed off landing. Externally, the property offers an enclosed, private gardens.

This home is ideally set within easy reach of a wealth of local amenities and allows for easy access to the hospital, A47 and Norwich City Centre. An ideal opportunity for any young family or first time buyer, an internal viewing comes highly recommended.

